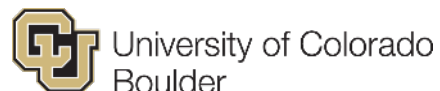
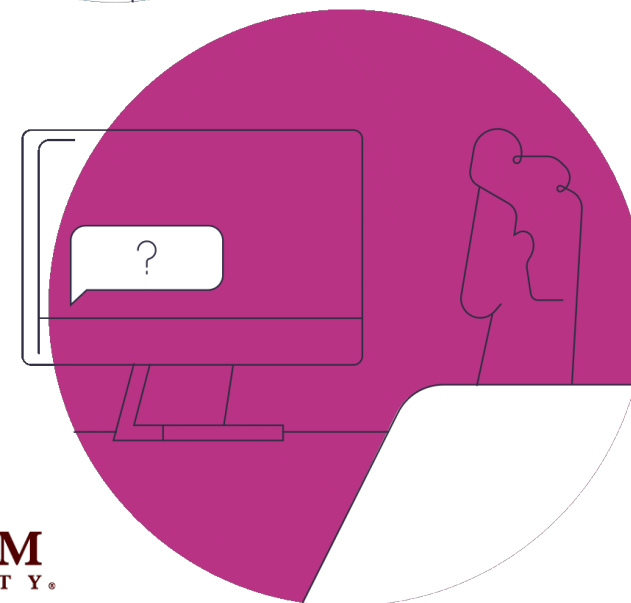
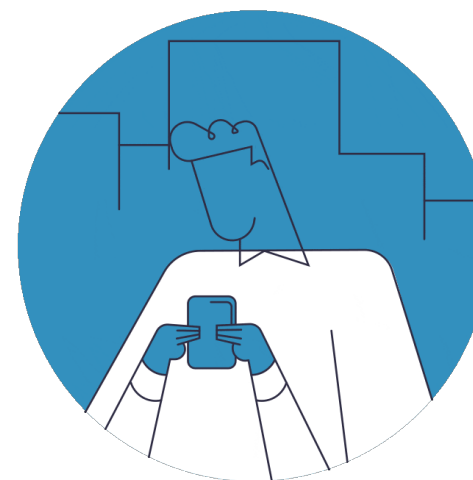




# ISC25 Open OnDemand User Group Meeting

*Karen Tomko, Emily Moffat Sadeghi, Dhruva  
Chakravorty*



This work is supported by the National Science Foundation of the United States under the awards 1534949, 1835725, 2138286, 2303692, and 2411375-7

[openondemand.org](https://openondemand.org)

# Quick Survey

## Instructions

Go to

**[www.menti.com](https://www.menti.com)**

Enter the code

**4587 5920**



Or use QR code

# Agenda

**About Open OnDemand**

Community Updates

Community Stories

Development and Support

Open Floor Discussion

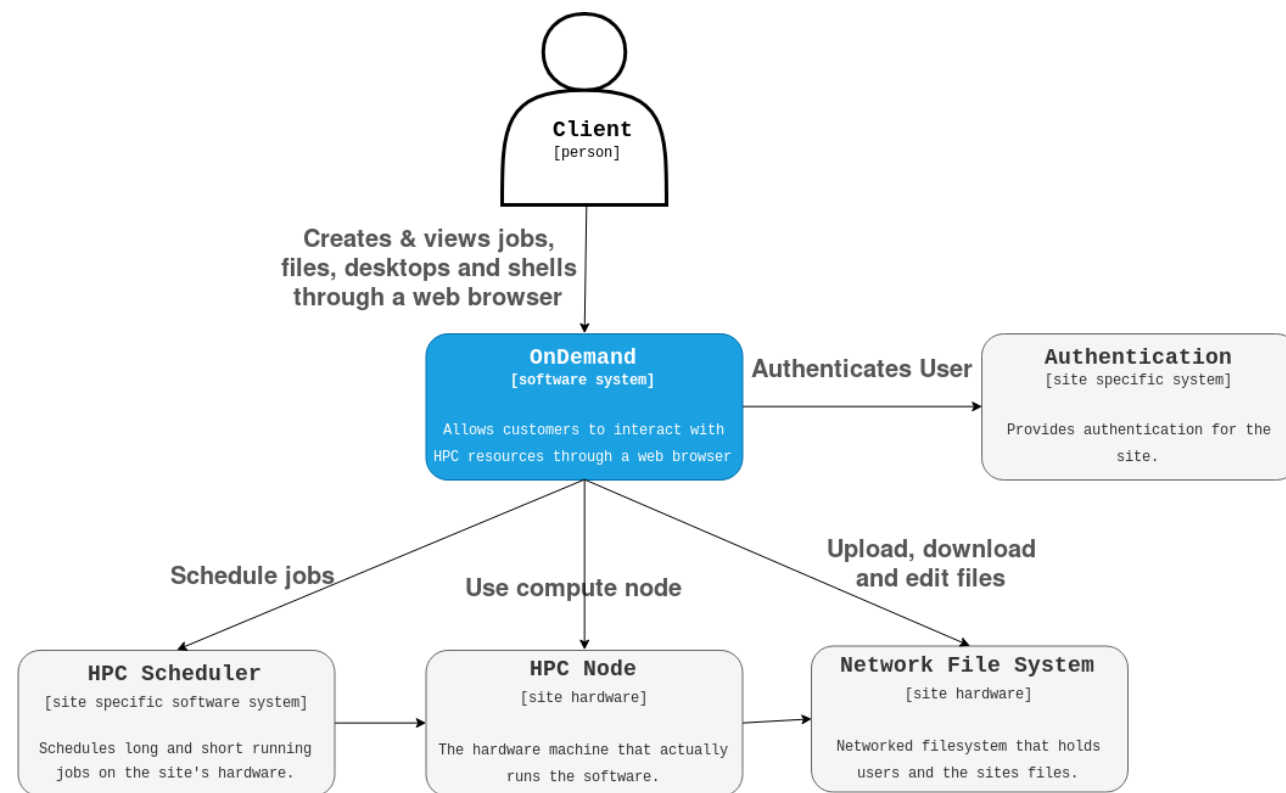


# About Open OnDemand

In the late 2000s, when smartphones made information accessible anywhere, we had an epiphany: what if you could access supercomputers from anywhere, too?

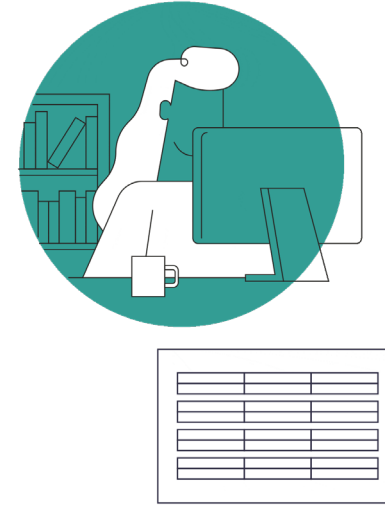
## Enter Open OnDemand

Created as an open-source platform to easily access supercomputing resources through the browser.



# Run Open OnDemand

Access your organization's supercomputers through the web to compute from anywhere, on any device.



## Zero installation

Run Open OnDemand entirely in your browser. No client software installation required.

## Easy to use

Start computing immediately. A simple interface makes Open OnDemand easy to learn and use.

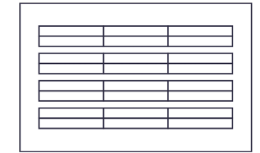
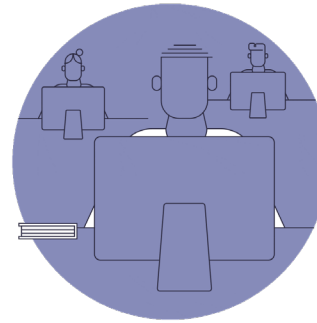
## Compatible with any device

Launch on any device with a browser—even a mobile phone or tablet.

[openondemand.org/run](https://openondemand.org/run)

# Install Open OnDemand

Administer remote web access to your supercomputers to transform the way users work and learn.



## Low barrier to entry

Empower users of all skill levels by offering an alternative to command-line interface.

## Free and open source

Install Open OnDemand for free, and gather knowledge from our large open-source community.

## Configurable and flexible

Create and deploy your own applications to meet your users' unique needs.

[openondemand.org/install](https://openondemand.org/install)

# Sample Deployments

OSC OnDemand

Files

Jobs

Clusters

Interactive Apps


My Interactive Sessions

All Apps

Help


Logged in as emoffat

Log Out




OnDemand provides an integrated, single access point for all of your HPC resources.


Recently Used Apps




Code Server  
System Installed App



Blender  
System Installed App



Ascend Desktop  
System Installed App



RStudio Server  
System Installed App

### Message of the Day

#### 2025-05-15 - Instability on Clusters after May 13 Downtime

We've been experiencing some instability on the clusters (particularly Cardinal and Ascend) following the recent May 13 downtime, especially with parallel job processing. If you notice any unusual behavior with your jobs, please contact OSC Help.

#### 2025-04-16 - Upcoming OS Migration May Impact Classroom Services

We will perform an OS migration that will affect our classroom services. If you plan to run classroom projects at OSC using the Jupyter or RStudio app this summer, please contact [oschelp@osc.edu](mailto:oschelp@osc.edu) as soon as possible so we can plan accordingly.

#### 2024-07-22 - Change is Coming!

Later this fall, OSC will be introducing a major change to the current process clients use to get help. We will be rolling out a new web-based system for clients to manage and review open cases with the service desk. More information will be forthcoming over the next few months, so keep an eye out for messages on various OSC communication channels, as well as at [https://www.osc.edu/service\\_portal\\_deployment](https://www.osc.edu/service_portal_deployment).

Looking for a classroom?

[Go to class.osc.edu](#)

**Jobs Efficiency Report - 2025-4-28 to 2025-5-28** [Open XDMoD](#)


No data available.

**Core Hours Efficiency Report - 2025-4-28 to 2025-5-28** [Open XDMoD](#)

No data available.

**Recently Completed Jobs - 2025-4-28 to 2025-5-28** [Open XDMoD](#)

ID	Name	Date
No data available.		

powered by  
OPEN  nDemand

OnDemand version: 4.0.3

openondemand.org

# Sample Deployments

OSC OnDemand

Files ▾ Jobs ▾ Clusters ▾ Interactive Apps ▾ My Interactive Sessions ▾ All Apps

Help ▾ Logged in as emoffat Log Out

SCC OnDemand

Files ▾ Quotas ▾ Login Nodes ▾ Interactive Apps ▾ My Interactive Sessions

Help ▾ Logged in as ktrn Log Out

Scheduled Downtime - June 2-4, 2025


The Shared Computing Cluster (SCC) will be offline while the MGHPCC, which houses the SCC, undergoes scheduled annual maintenance.

Research Computing Training Series - May 27 - June 13, 2025

[Register here](#)

Session was successfully deleted.

×



Access the SCC using only your web browser!

[SCC OnDemand Documentation](#)

powered by

powered by

OPEN **OnDemand**

OPEN **OnDemand**

OnDemand version: 3.1.7



# Sample Deployments

OSC OnDemand

Files ▾ Jobs ▾ Clusters ▾ Interactive Apps ▾ My Interactive Sessions All Apps

Help ▾ Logged in as emofat Log Out

SCC OnDemand


Files ▾ Quotas ▾ Login Nodes ▾ Interactive Apps ▾ My Interactive Sessions


Help ▾ Logged in as ktrn Log Out

DEAC OnDemand

Files ▾ Jobs ▾ Clusters ▾ Interactive Apps ▾ My Interactive Sessions

Help ▾ Logged in as anderss Log Out






WAKE FOREST  
UNIVERSITY  
Information Systems


DEAC OnDemand is an integrated, single access point for all of your HPC resources.

Pinned Apps


DEAC Apps




Avogadro  
System Installed App




Blender  
System Installed App




Code  
System Installed App




DBeaver  
System Installed App




FastQC  
System Installed App



G-PhoCS  
System Installed App



GaussView  
System Installed App



Jupyter Notebook  
System Installed App

Message of the Day

2025-01-13 FDOC Spring 2025


Happy Spring FDOC from the HPC Team! DEAC OnDemand will be used in 4 classes this semester, where students will be able to carry out their coursework on the DEAC Cluster.


2024-09-03 Fall 2024 Pilot Phase

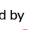
Open OnDemand now in its pilot phase during the Fall 2024 semester. Selected user groups will be able to leverage OOD and the DEAC Cluster for their research and classroom work.

2024-07-15 Entering OOD Phase 1

The DEAC Cluster is now entering Phase 1 of its Open OnDemand deployment. This milestone was achieved after the successfully submitting the first interactive job through the OOD interface.

powered by  
OPEN  nDemand

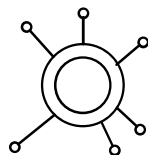
powered by  
OPEN  nDemand

powered by  
OPEN  nDemand

OnDemand version: 3.1.11

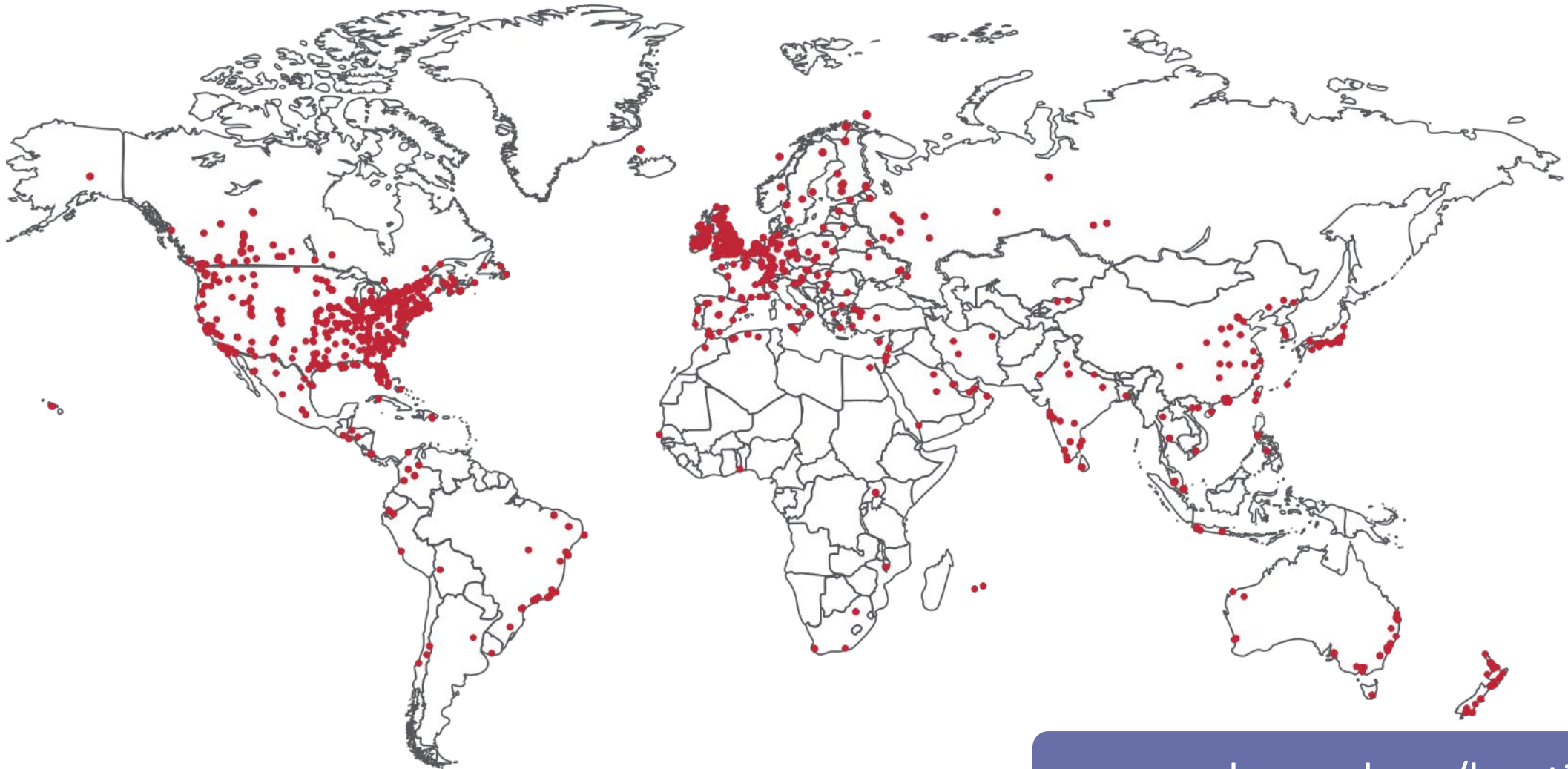
# Site Configuration

- Known authentication protocols and solutions:
  - OIDC/OAuth 2.0, CAS, SAML, LDAP and Kerberos
  - Shibboleth, Dex, Keycloak, ADFS, Microsoft Entra ID, and CAS
- Known scheduler integrations:
  - Slurm, Torque, PBSPro, LSF, Grid Engine, Linux Host, Cloudy Cluster, Kubernetes, Systemd



# Deployed Worldwide

100+ Countries | 2,100+ Organizations



[openondemand.org/locations](https://openondemand.org/locations)

# Example Deployments

## Nonprofit / Research centers



## International academia



## Government



## Minority-serving institutions



## Private academia



## Public academia



## Industry



[openondemand.org/orgs](https://openondemand.org/orgs)

# Enabled Utilities & Apps



Abaqus



AMDuProf



ANSYS



Arm



BEAST 2



Blender



CHIMERA



COMSOL



Coot



DeepLabCut



Eclipse



Firefox



Galaxy



GaussView



Grace



GSEA



IDL



Jupyter



LS-DYNA



Lumerical



Maestro



Mathematica



MATLAB



Maya



Meshroom



MRICron



NetLogo



Nsight Eclipse



Octave



OVITO



ParaView



PseudoFuN



PSPP



PyCharm



PyMOL



QGIS



RELION



RStudio



Schrodinger



Shiny



Siril



STAR-CCM+



Stata



TensorBoard



Visit



Visual Studio Code



VMD



WebMO



XDMoD

# Commercial Cloud

OPEN  nDemand



[openondemand.org/aws](https://openondemand.org/aws)



[openondemand.org/azure](https://openondemand.org/azure)



[openondemand.org/gcp](https://openondemand.org/gcp)



[openondemand.org/oci](https://openondemand.org/oci)

Open OnDemand with Azure CycleCloud Apps Files Jobs Clusters Interactive Apps

OPEN

 nDemand

OnDemand provides an integrated, single access point for all of your HPC resources.

Pinned Apps A featured subset of all available apps

Clusters



Slurm ccw Shell Access  
System Installed App

Interactive Apps

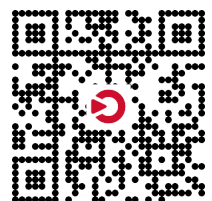
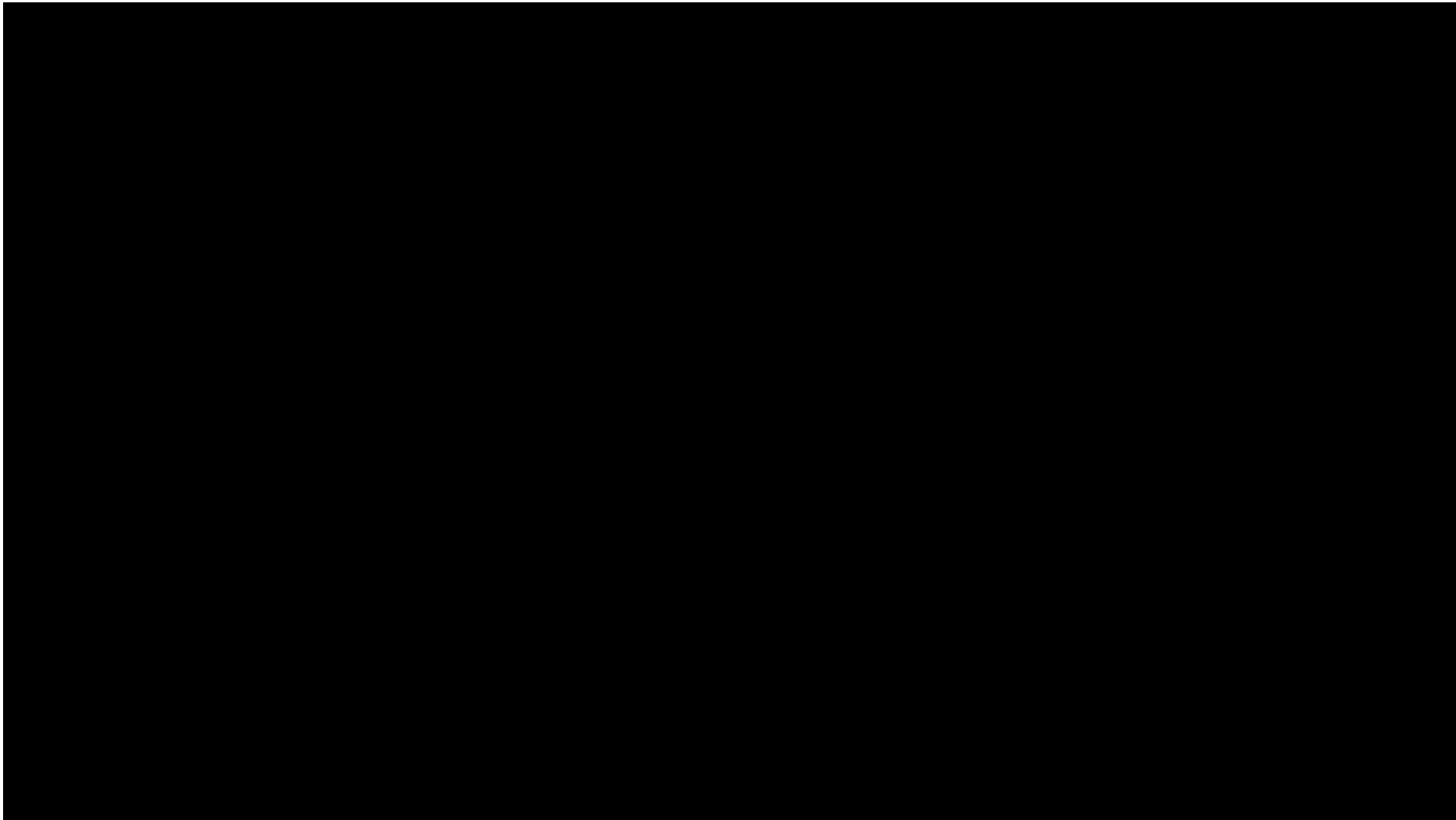


VSCode on Compute Node  
System Installed App



VSCode on Login Node  
System Installed App

# Any Challenge, Every Solution



[openondemand.org/anyschallenge](https://openondemand.org/anyschallenge)

# Agenda

About Open OnDemand

**Community Updates**

Community Stories

Development and Support

Open Floor Discussion





# HPCwire Award

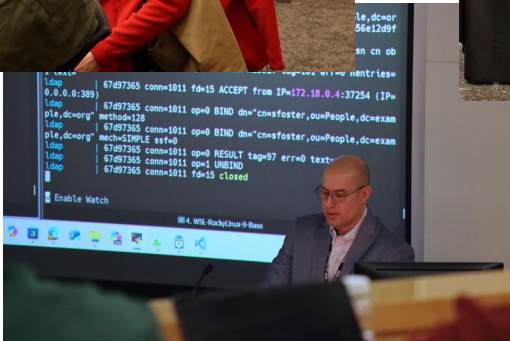
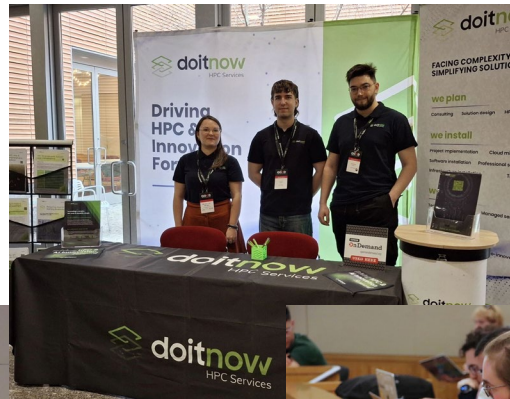


Thank you to all who  
use Open OnDemand  
and those who voted  
in the HPCwire  
Readers' Choice!

[openondemand.org](https://openondemand.org)

## The Conference for the Global Open OnDemand (GOOD) Community

Inaugural Conference was held from  
March 17-20, 2025 at Harvard University



## Outcomes

- 170+ attendees
- 50+ talks
- 10 countries represented
- Attendees from:
  - US government
  - US non-profits
  - US public and private institutions
  - International non-profits
  - International academia
  - Commercial entities

# Contributor Jam

## Outcomes

- 75+ attendees
- 4 hours of content
- 25+ pull requests
- 4 repositories
- 11 individuals awarded



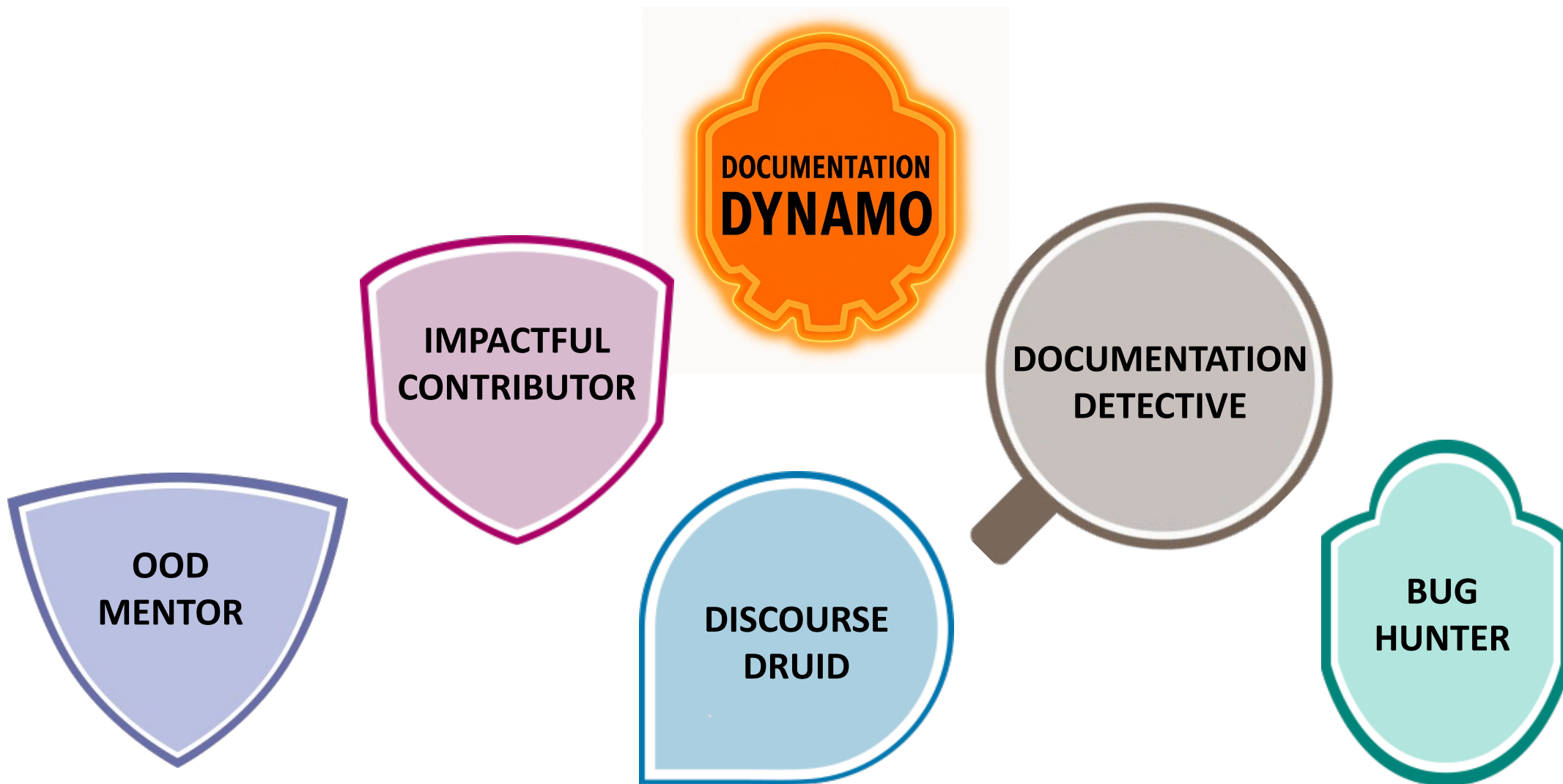
**Comprehensive deep  
dive**

**Repos, gems, adapters,  
schedulers**

**Walkthrough and resources  
for pull requests**

[github.com/OSC/contributor\\_guide](https://github.com/OSC/contributor_guide)

# Jam Recognition



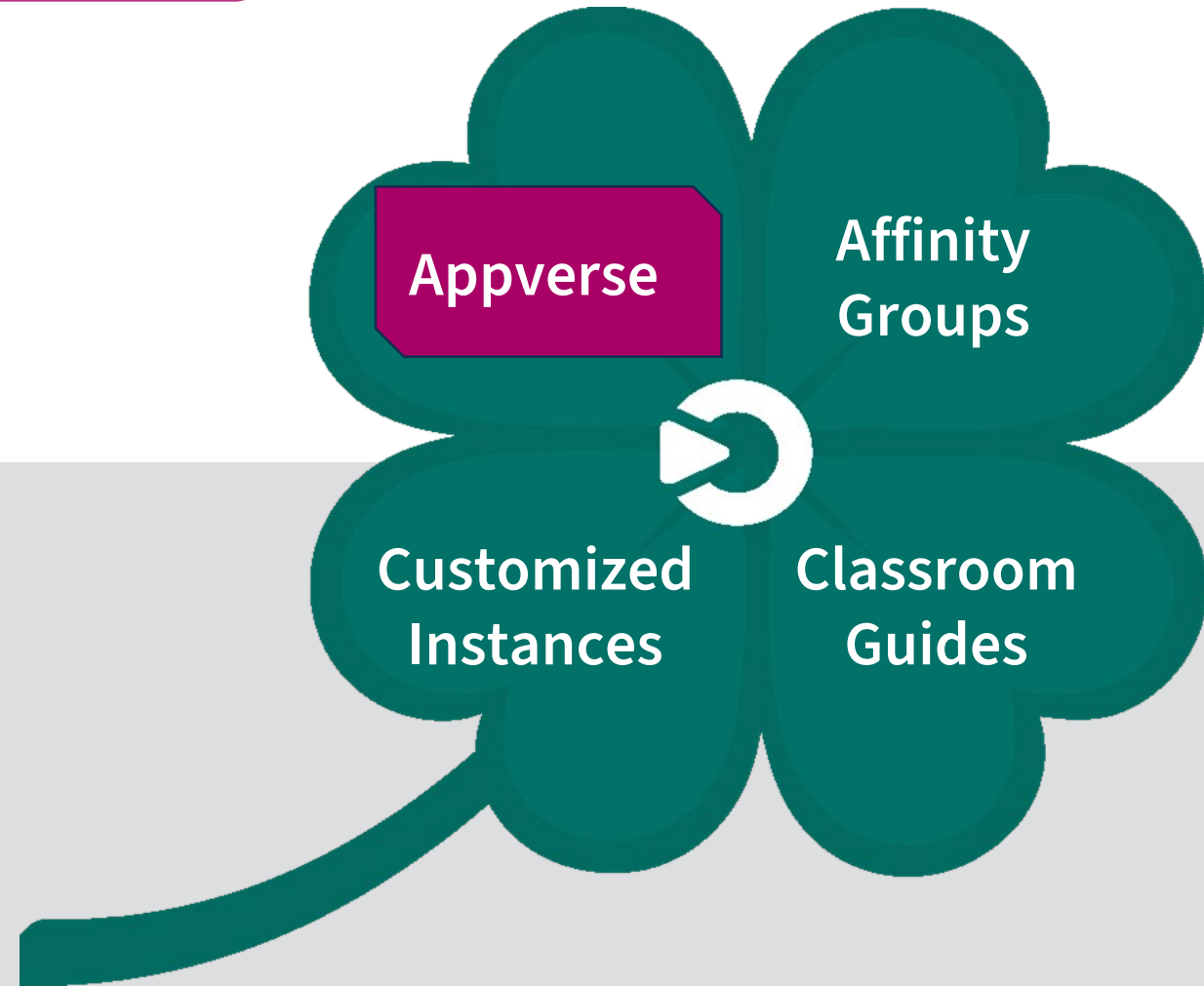
[discourse.openondemand.org](https://discourse.openondemand.org)



GOODLUCK

# Growing Open OnDemand: Leveraging Unified Community Knowledge

Domain solutions for the sciences,  
engineering & education



# The OOD Appverse

Apps for scientific applications by developers, and researchers

## KEY FEATURES

- Build and share apps for your OOD instance (GitHub)
- Central repository for apps
- Apps can be for research or IT functions
- Tiered structure - validated and sponsored apps
- Curation process – maintenance, updates, and training
- AI app integration
- Affinity Groups will publicize the Appverse



Stable Diffusion  
System Installed App



Classroom Jupyter  
System Installed App



Classroom RStudio  
System Installed App



Blender  
System Installed App



QGIS  
System Installed App



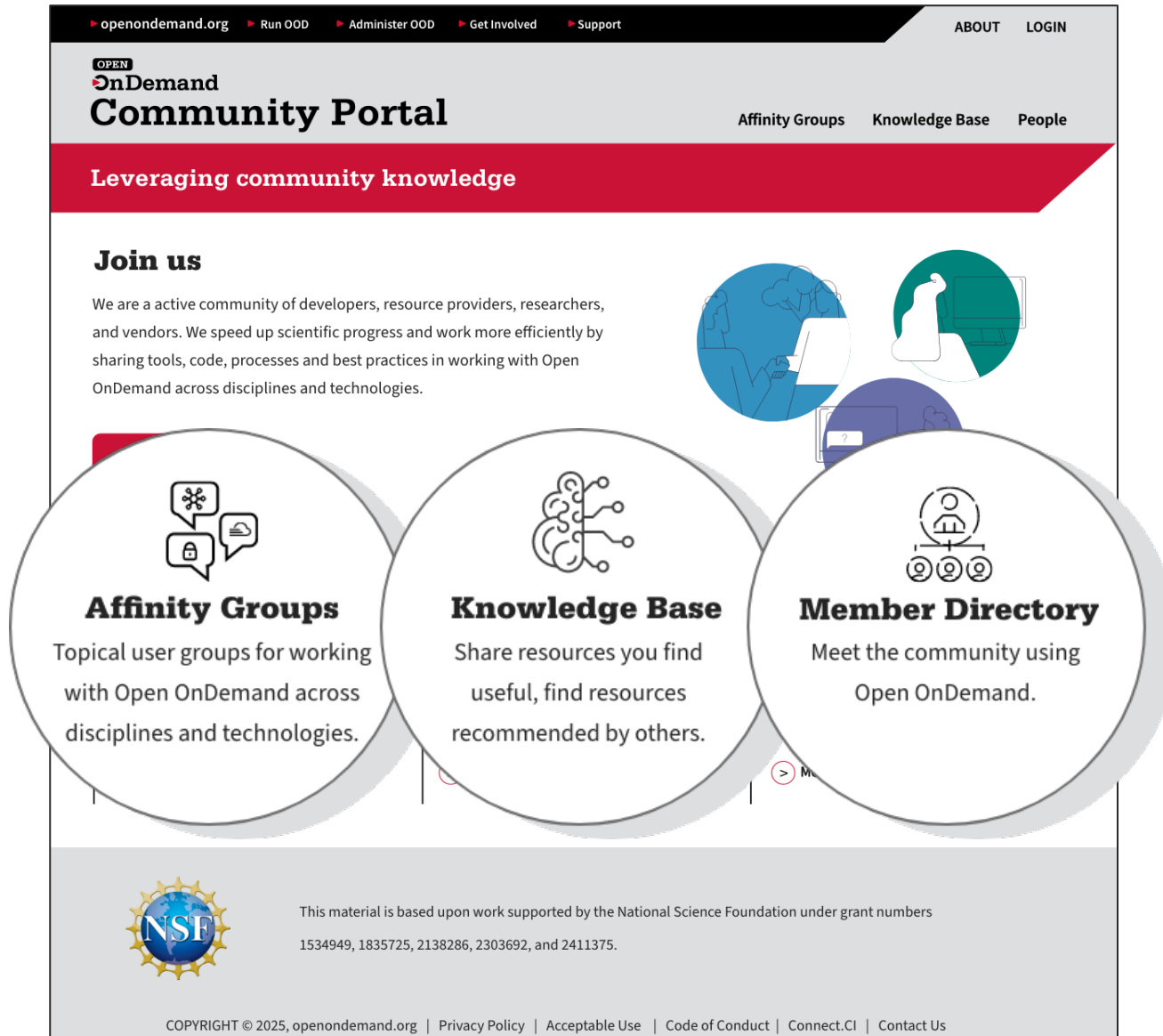
IQmol  
System Installed App



Jupyter + Spark  
System Installed App

[ondemand.connectci.org](https://ondemand.connectci.org)

# Community Portal



The screenshot shows the OpenOnDemand Community Portal homepage. At the top is a navigation bar with links: openondemand.org, Run OOD, Administer OOD, Get Involved, Support, ABOUT, and LOGIN. Below this is a header with the OpenOnDemand logo and the title 'Community Portal'. A red banner below the header reads 'Leveraging community knowledge'. The main content area features a 'Join us' section with a paragraph about the community. Below this are three large circular icons representing 'Affinity Groups', 'Knowledge Base', and 'Member Directory'. The footer includes the NSF logo, a disclaimer about NSF funding, and a copyright notice.

openondemand.org Run OOD Administer OOD Get Involved Support ABOUT LOGIN

OPEN  
OnDemand  
**Community Portal**

Affinity Groups Knowledge Base People

**Leveraging community knowledge**

**Join us**

We are a active community of developers, resource providers, researchers, and vendors. We speed up scientific progress and work more efficiently by sharing tools, code, processes and best practices in working with Open OnDemand across disciplines and technologies.

**Affinity Groups**  
Topical user groups for working with Open OnDemand across disciplines and technologies.

**Knowledge Base**  
Share resources you find useful, find resources recommended by others.

**Member Directory**  
Meet the community using Open OnDemand.

NSF

This material is based upon work supported by the National Science Foundation under grant numbers 1534949, 1835725, 2138286, 2303692, and 2411375.

COPYRIGHT © 2025, openondemand.org | Privacy Policy | Acceptable Use | Code of Conduct | Connect.CI | Contact Us

## Affinity Groups connect community members with common interests

- Links to communication channels
- Central repository for documentation, code samples, tutorials, etc.
- Member email lists
- Announcements, events, and trainings

## Flexible usage

- Groups can be short term or long term
- Building repositories or active discussion

Join at [Openondemand.org/portal](https://openondemand.org/portal)

# Affinity Group Implementation

openondemand.org ▶ Run OOD ▶ Administer OOD ▶ Get Involved ▶ Support Log in

OPEN **OnDemand**  
**Community Portal**

About Affinity Groups Knowledge Base People

**Affinity Groups**




REQUEST AN AFFINITY GROUP

Search

**Tags**

- ☐ open-ondemand (10)
- ☐ workforce-development (2)
- ☐ azure (1)
- ☐ bioinformatics (1)
- ☐ cloud (1)
- ☐ cloud-computing (1)
- ☐ community-outreach (1)
- ☐ computer-science (1)
- ☐ cybersecurity (1)
- ☐ data-analysis (1)

Show more

Affinity Group	Description	Join
	<b>Customizing the OOD Backend</b> This affinity group explores using OOD tools—like initializers and plugins—to customize site behaviors. The focus is on extending functionality and making the user experience simpler.  <span>open-ondemand</span>	<a href="#">JOIN</a>
	<b>Genomics with OOD</b> This group is for genomics researchers using Open OnDemand to share tips, troubleshoot, and discuss optimizing bioinformatics workflows.  <span>data-analysis</span> <span>genomics</span> <span>bioinformatics</span> <span>open-ondemand</span>	<a href="#">JOIN</a>
	<b>LLMs and OOD</b> This group explores ways to integrate LLMs with OOD, including building user-facing apps and enhancing how users interact with tools in the OOD ecosystem, and more.	<a href="#">JOIN</a>

openondemand.org ▶ Run OOD ▶ Administer OOD ▶ Get Involved ▶ Support Log in

OPEN **OnDemand**  
**Community Portal**

About Affinity Groups Knowledge Base People

**Open OnDemand Security Best Practices**

open-ondemand data-security cybersecurity secure-data-architecture

This group serves as a dedicated space for the Open OnDemand community to share and discuss essential information for the secure deployment and operation of Open OnDemand. Maintaining a secure and robust operational environment is critical to the platform's success. Administrators and developers are encouraged to follow recommended security practices, stay informed about updates, and regularly review security settings to ensure optimal protection.

Members get updates about announcements, events, and outages.

[JOIN](#)

**Knowledge Base Resources**

Title	Tags	Skill Level
TrustedCI Open OnDemand 2021 Audit	<span>cybersecurity</span>	
Apache HTTP Server 2.4	<span>authentication</span> <span>data-security</span> <span>cybersecurity</span>	

**OOD Security Best Practices**

**Upcoming Events**

No upcoming events.  
[See past events](#)

**Announcements**

No announcements.

**Coordinators**

Join at [Openondemand.org/portal](https://Openondemand.org/portal)



# Affinity Groups

Open OnDemand Security  
Best Practices

New to Open OnDemand

OOD Project Design

Job Stats

Multilingual Community

OOD User Training

Instrumentation/monitoring

Structural Biology Applications

OOD on Azure

Containers

LLMs and OOD

Genomics on OOD

Customizing the OOD Front  
End

Customizing the OOD Back End

Web Apps and Absolute URLs  
with OOD

Join at [Openondemand.org/portal](https://openondemand.org/portal)

# Agenda

About Open OnDemand

Community Updates

**Community Stories**

Development and Support

Open Floor Discussion



# Community Stories

How is the community  
leveraging Open OnDemand?



Antoine Schonewille



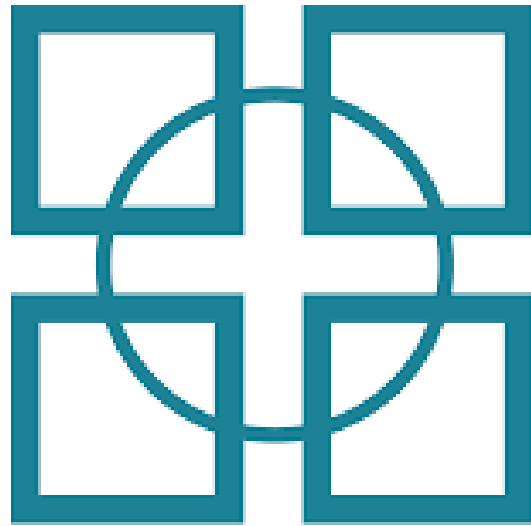
Jordi Blasco Pallares



Henrik Nortamo

[openondemand.org/community](https://openondemand.org/community)

# Community Stories



clustervision

Antoine Schonewille

[openondemand.org/community](https://openondemand.org/community)

# TrinityX: The Future of HPC & AI Cluster Management

**OPEN**  
 **nDemand**

+

  
ClusterVision

  
trinity**X**



**ISC**

The HPC Event.

High Performance , BoF Session, 12<sup>th</sup> June 2025

# ClusterVision - your experienced HPC/AI partner

**20+**YRS

Leading SME  
specialist for HPC

**800+**

Projects successfully  
completed



Developer of TrinityX  
Open-Source Cluster  
Manager

**20+**

Top500 HPC  
Installations  
historically



ClusterVision used to be a mother  
company of Bright Computing. The  
same people who developed Bright are  
now developing TrinityX.

**€230M**



Revenue



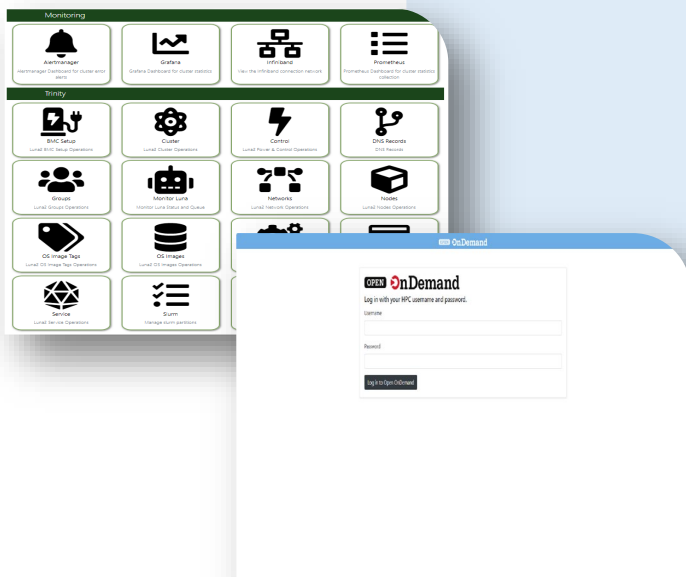
# Cluster Management With TrinityX

**TrinityX** is an HPC/AI Cluster Management Environment consisting of a fine-tuned and integrated collection of well known Open-Source HPC & AI tools, complemented by in-house developed management software and applications.





Access your HPC/AI cluster through a web browser and compute from anywhere, on any device



TrinityX is fully integrated with Open OnDemand

Powerful Synergy which results in a Better Experience for Every User

## Why Open OnDemand?

- ✓ **Lowers the threshold for HPC/AI admins**, making clusters accessible to non-expert users.
- ✓ **Configure** and monitor the **cluster graphically**
- ✓ Users can use HPC resources without complex SSH logins.
- ✓ **Run GUI-based applications** like Jupyter, RStudio, MATLAB, Ansys, ParaView, and remote desktops directly from the portal.
- ✓ Provides a **single access point for users**, reducing the need for multiple login mechanisms.
- ✓ **Manage** users & all nodes **via a Web browser**
- ✓ **Integrates with existing authentication** (LDAP, Active Directory, SSO) for secure user access.



# TrinityX Enterprise Support Levels

Gain a peace of mind and a more efficient cluster —so you can focus on what truly matters.

## Pro-active Support Remote System Administration (RSA)

*We take care of everything—so you can focus on what matters most.*

- Who is this for**
- ✓ Organisations that want a hands-off approach to HPC cluster management.
  - ✓ Teams that need experts to handle system administration, updates, monitoring, and issue resolution.

- Key Benefits**
- ✓ Maximised uptime with proactive intervention
  - ✓ Reduced operational burden
  - ✓ Peace of mind with expert-led maintenance

## Enhanced Support

*You manage your system—we ensure it runs optimally.*

- Who is this for**
- ✓ Organisations with in-house IT/admins but need expert backup and guidance.
  - ✓ Teams looking for guaranteed support beyond basic break/fix.

- Key Benefits**
- ✓ Faster issue resolution with priority access to experts
  - ✓ Improved performance through expert tuning
  - ✓ Reduced risk with professional guidance

## Self – Managed Support

*You run your system—we're here when you need us.*

- Who is this for**
- ✓ Organisations with internal IT expertise to handle day-to-day operations.
  - ✓ Those who want basic support options without ongoing engagement.

- Key Benefits**
- ✓ Free support for teams with in-house expertise
  - ✓ Access to support when needed via GitHub
  - ✓ Freedom to manage the cluster independently

# Let's talk more at Booth #G19

<https://clustervision.com/>

<https://github.com/clustervision/trinityX>

[sales@clustervision.com](mailto:sales@clustervision.com)



# Community Stories



Jordi Blasco Pallares

[openondemand.org/community](https://openondemand.org/community)

Montpellier

Munich

Turin

Barcelona

- EMEA (Spain, Italy, France, Germany)
- APAC (New Zealand, Australia, India)
- NALA (USA, Canada, Brazil)

Auckland

Open Source  
Contributors

~50% Scientists  
~50% Computer  
Engineers

+30 years in  
HPC sector

+160 people  
globally

# Community Stories



Henrik Nortamo

# Open OnDemand for the EuroHPC Federation Platform (EFP)

- Using OOD to provide interactive computing for federated HPC and AI systems in Europe
  - EuroHPC funded systems, e.g. LUMI, JUPITER, MN5, LEONARDO ... -> +20 systems
  - Quantum resources also to be federated, role of interactive interface to be specified
- Working on moving OOD deployment "further" away from a system
  - Basic filesystem abstraction in progress (just over SSH)
  - Exploring how well remote file browsing can be made to work
  - Central deployment, so not one OOD per system. Interesting scalability limits to be explored, HA or similar might be a good solution.
  - Experimenting with kubernetes deployment (might not make the cut)
- Focus first on the "standard" apps and functionality
- Plan is to upstream any generic functionality which makes sense
  - Auxiliary functionality might not make sense in the upstream but can be open-sourced if useful. E.g. SSH certificate handling or integrations with allocation management systems.



# Agenda

About Open OnDemand

Community

Community Stories

**Support and Development**

Open Floor Discussion



# Community Events



## Tips and tricks calls

Hosted by the larger Open OnDemand community, tips and tricks webinars share best practices for setting up and using Open OnDemand. They take place on the first Thursday of every month at 1 p.m. ET in the US



## Open office hours

Hosted by our development team, Zoom open office hours are the perfect opportunity to ask questions or make a suggestion. They are held on the second Tuesday of every month from 11:15 a.m. to 12:45 p.m. ET in the US

***European and Asia Pacific-timed versions of these calls will be starting in 2H2025***

[openondemand.org/events](https://openondemand.org/events)



# Established Support Mechanisms



## Discuss on Discourse

The Get Help category features user and admin questions and answers.

[openondemand.org/discourse](https://openondemand.org/discourse)



## Slack Workspace

Communicate and collaborate with the project team and community members.

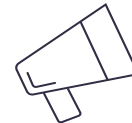
[openondemand.org/slack](https://openondemand.org/slack)



## GitHub Documentation

Outlines installation steps, app guidelines, release notes, and more.

[openondemand.org/docs](https://openondemand.org/docs)



## Constant Contact Newsletter

Subscribe to get notices about upcoming events, new releases and user stories.

[openondemand.org/newsletter](https://openondemand.org/newsletter)

[openondemand.org/support](https://openondemand.org/support)

# Customizable Support Subscription

- High-level customer support for implementing and maintaining Open OnDemand
- SLA that commercial or industry entities often require
- Contributes sustainable, ongoing funding for Open OnDemand

## Benefits of Support Subscriptions:

### Priority GitHub issue support

Priority triaging of GitHub issues opened in the Open OnDemand repositories.



### Exclusive access to a priority support channel on Discourse

Priority access to a support channel, monitored by Open OnDemand technical staff during standard business hours.

### Consulting Services available

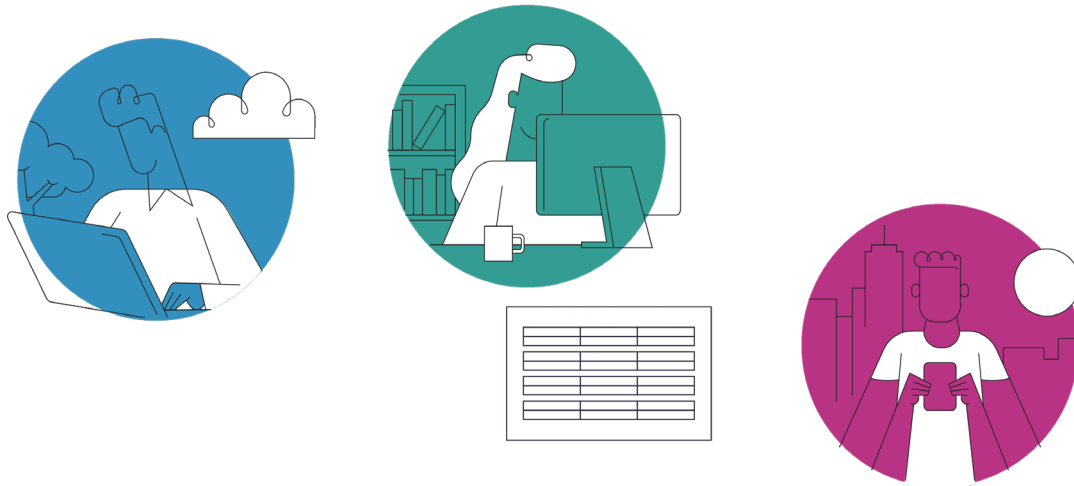
Access to purchase consulting hours with the Open OnDemand developers.



[openondemand.org/subscribe](https://openondemand.org/subscribe)

# Support Partners

- Actively working to identify partners worldwide to provide first- and second-level support
- Open OnDemand technical team will provide third-level support and dedicated support, in collaboration with partners, on an as-needed basis

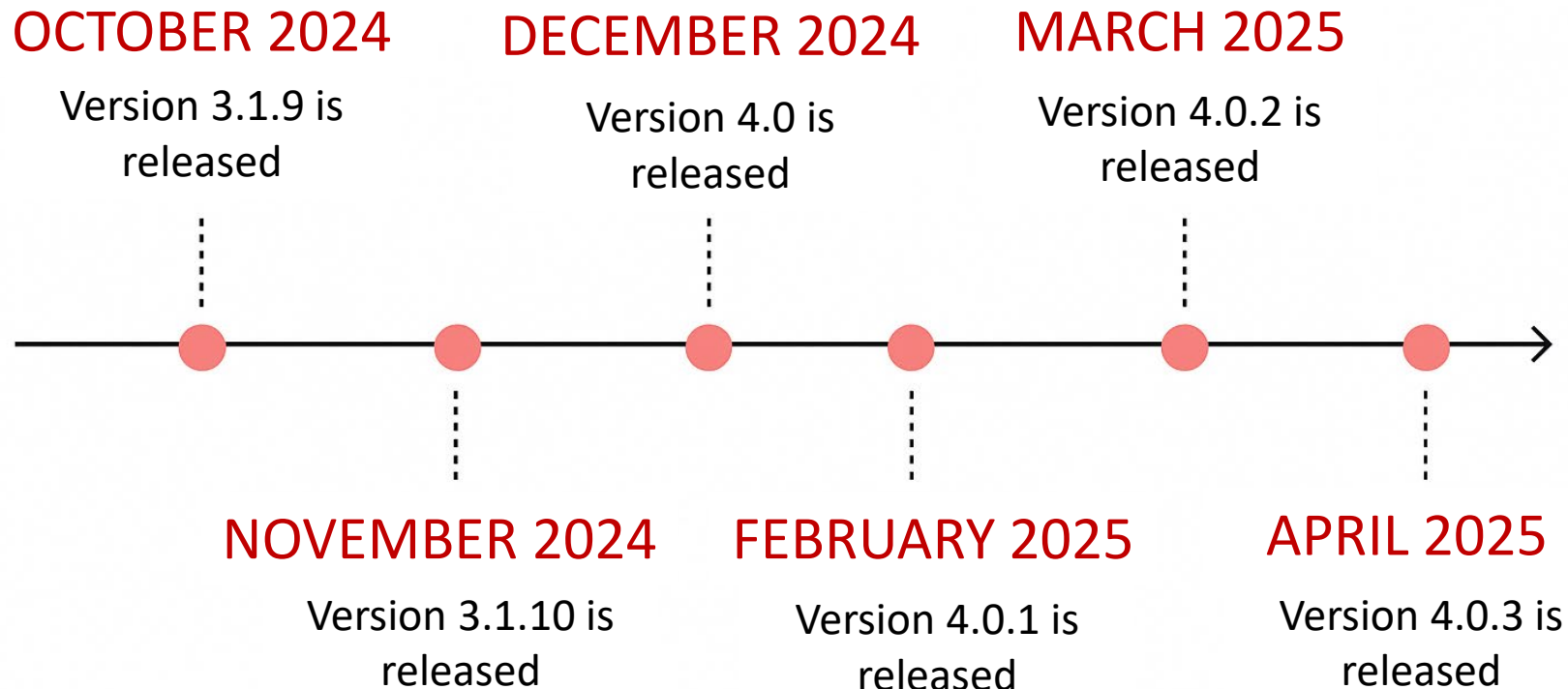


## Benefits of Support Partners:

- Native language support available during local business hours
- Enables clients to purchase support from trusted partners with region-specific knowledge
- Ensures clients third-level support for Open OnDemand during tender process

[openondemand.org/subscribe](https://openondemand.org/subscribe)

# Development Timeline



# Community Contributions

OPEN  nDemand



SAPIENZA  
UNIVERSITÀ DI ROMA



HARVARD  
UNIVERSITY



[openondemand.org/community](https://openondemand.org/community)

# 4.1 View – Dev Rel Edition

## Milestone Bucket

○ Milestone Bucket 44

- ondemand #3348  
support for auto\_reservations  
4.1 release component/batch\_connect
- ondemand #3493  
enable http2 in apache  
4.1 release component/ood\_portal\_generator
- ondemand #3494  
subapps replace base app  
4.1 release component/batch\_connect
- ondemand #1866  
refactor dashboard's inline javascript  
4.1 release area/tech debt component/dashboard enhancement
- ondemand #1001  
consider using outline buttons throughout the app

## High Priority

○ Epics Planned for 4.1 10

- ondemand #3570  
Caching overhaul  
4.1 release community request Epic
- ondemand #2199  
Overview: OOD Test Coverage  
4.1 release area/testing Epic
- ondemand #2476  
remaining dynamic batch connect items  
4.1 release community request component/batch\_connect Epic
- ondemand #3393  
enhance path selector  
4.1 release component/batch\_connect component/path\_selector enhancement
- ondemand #4119

## High Priority

○ High Priority / Importance 20  
Community requests, accessibility, related to chosen epics, etc.

- ondemand #3251  
selinux denials with configless slurm  
4.1 release area/build area/installation community request component/dashboard
- ondemand #3713  
selinux patch for symlinks  
4.1 release area/installation community request
- ondemand #3452  
globally installed gems are not accessible in OOD  
4.1 release area/installation bug community request
- ondemand #242  
File-Editor: Key binding doesn't match select menu when re-opening

## In Progress

○ Medium Priority / Importance 21  
Bugs, related to chosen epics, etc.

- ondemand #3506  
data-hide does not work on radio buttons  
4.1 release bug component/batch\_connect
- ondemand #1368  
Truncated files cause issues  
4.1 release bug community request component/file\_browser
- ondemand #4162  
App/Sub-app attribute label change doesn't always apply  
4.1 release community request Bug
- ondemand #4177  
PM - template selection puts the wrong value for icon  
4.1 release component/project manager Bug

○ In Progress 10  
Currently being worked on by a dev

- ondemand #673  
landmarks in 'my interactive sessions' page are off  
4.1 release area/accessibility bug component/batch\_connect
- ondemand #3910  
Add GPU request to interactive jobs card  
4.1 release community request component/batch\_connect enhancement
- ondemand #3932  
auto\_queues widget should check AllowQos property for slurm partitions  
4.1 release community request
- ondemand #2592  
replace sweetalert2  
4.1 release area/tech debt dependencies Epic

○ Closed Completed for Release 24

- ondemand #228  
navbar can overflow a lot  
4.1 release bug component/dashboard enhancement #4194
- ondemand #3666  
disable download button for certain files  
component/file\_browser #4008
- ondemand #4132  
how to globally set custom bc\_num\_hours item  
4.1 release community request component/batch\_connect #4282
- ondemand #664  
Interactive sessions cards not very accessible  
4.1 release area/accessibility component/dashboard enhancement #4061

## Epics Planned for 4.1

## Medium Priority

## Closed Completed for Release

## 4.1 Categorization

# Getting Involved

## How to get involved

Want to join the collaborative effort behind Open OnDemand? Here's how you can help.



### Contribute to documentation

Draft documentation for a new feature, app, or even fixing a typo.

> Find out More



### Contribute code

Write code for a new app or feature, and share it with our community.

> Find our More



### Spread the word

Mention us on LinkedIn @open-ondemand—or simply tell your friends!

> LinkedIn



### Join in on Discourse

Be part of the discussions, pitch a new app or feature, or report a bug.

> Discourse



### Engage with us

Collaborate with us to make your corporate or higher ed project a reality

> Email



### Fund the project

Provide monetary support to our development team or one of our partners. Every gift helps!

> Contact us

## Join our Working Groups

### Technical Committee

Oversees software decisions, collaborates with Dev Rel PM to provide guidance on pull requests, bug fixes, releases and updates. Nominates a Steering Council representative.

### User Documentation

Writes and maintains documentation to ensure the system admin community can install and the user community can run Open OnDemand quickly and easily.

### Contributor Guide

Maintains the Contributor Guide to provide clear, well-defined guidelines for contributing code and documentation to the project.

### Community Engagement

Builds the Open OnDemand community through affinity groups, community calls, events, support and partnerships. Nominates a Steering Council representative.

[openondemand.org/get-involved](https://openondemand.org/get-involved)

Thank You!

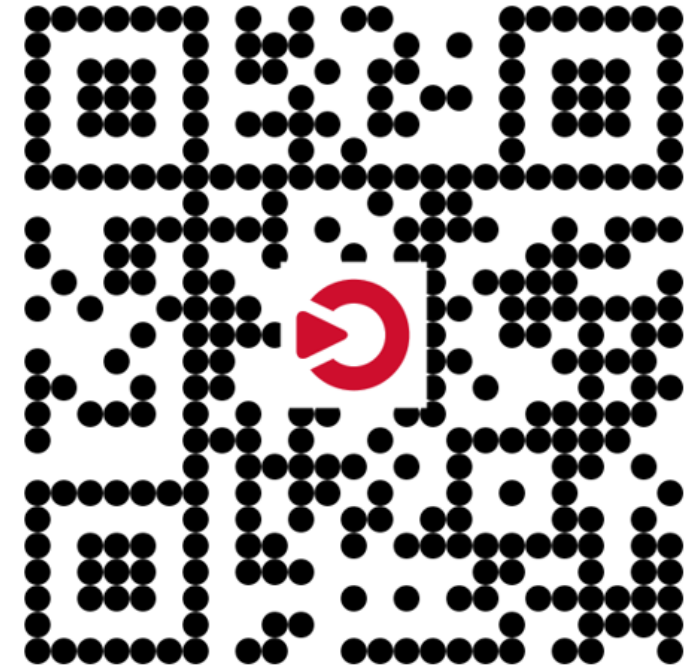
**Please take a moment to sign up for  
our mailing list for future updates!**

**Karen Tomko**

**Dhruva Chakravorty**

**Emily Moffat Sadeghi**

[emoffat@openondemand.org](mailto:emoffat@openondemand.org)



[openondemand.org/signup](https://openondemand.org/signup)



# Open Floor Discussion

## Instructions

Go to

**[www.menti.com](https://www.menti.com)**

Enter the code

**4587 5920**



Or use QR code