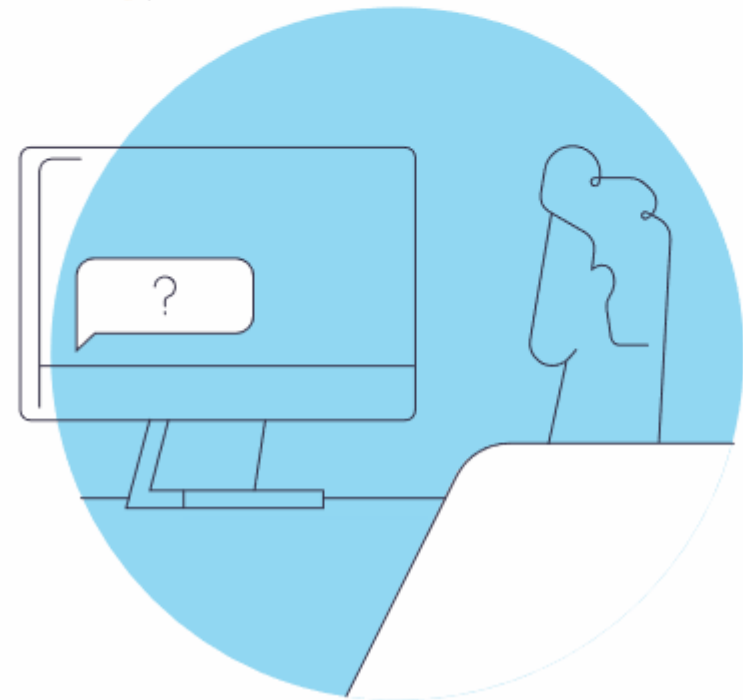


Gateways23

Julie Ma

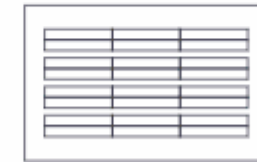


This work is supported by the National Science Foundation of the United States under the awards 1534949, 1835725, 2138286, and 2303692

openondemand.org/gateways23

Run Open OnDemand

Access your organization's supercomputers through the web to compute from anywhere, on any device.



Zero installation

Run Open OnDemand entirely in your browser. No client software installation required.

Easy to use

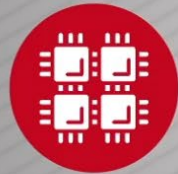
Start computing immediately. A simple interface makes Open OnDemand easy to learn and use.

Compatible with any device

Launch on any device with a browser—even a mobile phone or tablet.

openondemand.org/run

Any Device, Anywhere



Ohio Supercomputer Center

An **OH·TECH** Consortium Member

openondemand.org/anydevice

Install Open OnDemand

Administer remote web access to your supercomputers to transform the way users work and learn.



Low barrier to entry

Empower users of all skill levels by offering an alternative to command-line interface.

Free and open source

Install Open OnDemand for free, and gather knowledge from our large open-source community.

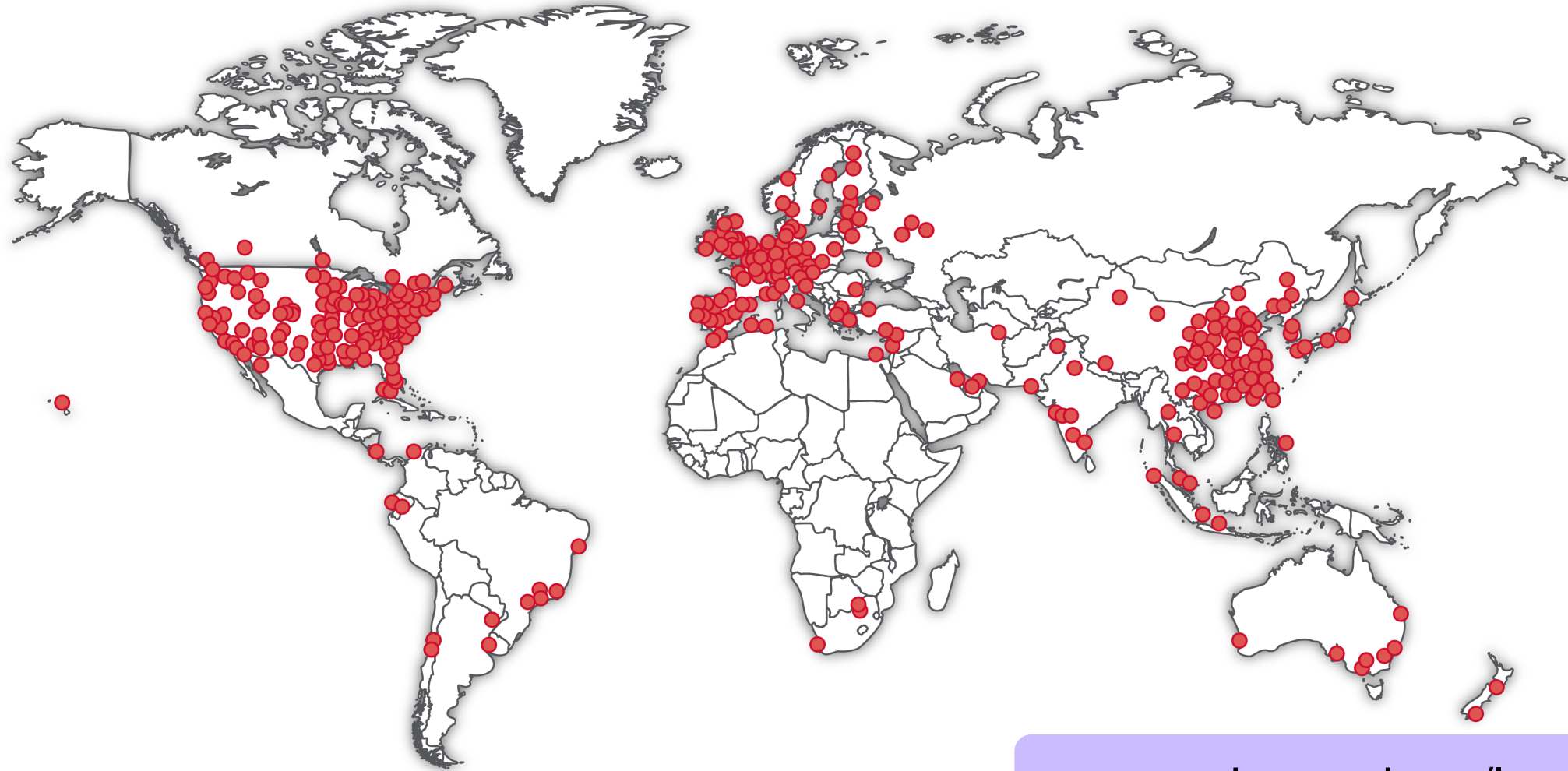
Configurable and flexible

Create and deploy your own applications to meet your users' unique needs.

openondemand.org/install

Deployed Worldwide

62 Countries | 683 Organizations



openondemand.org/locations

Enabled Utilities & Apps

Abaqus

ANSYS

COMSOL

Coot

CSD

Galaxy

Grace

Grafana

Grid Engine

IDL

Jupyter

Kubernetes

LSF

Lumerical

Mathematica

MATLAB

Meshroom

NAGIOS

Octave

Open XDMoD

Ovito

Paraview

PBS Professional

QGIS

RELION

RStudio

SAS

Shiny

Slurm

Spark

STATA

Tensorboard

Torque

VISIT

Visual Studio Code

VMD

Support



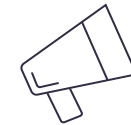
Discuss on Discourse

The Get Help thread on our Discourse forum features user and admin questions and answers. Browse recent questions or leave one of your own.



Documentation

Our documentation outlines installation steps, app development guidelines, release notes, and more. Search for a specific topic or browse for general info.



Newsletter

Subscribe to our newsletter to get notices about upcoming events and training, new releases and user stories.

Community Events



Tips and tricks calls

Hosted by the larger Open OnDemand community, tips and tricks webinars share best practices for setting up and using Open OnDemand. They take place on the first Thursday of every month at 1 p.m. ET.



Open office hours

Hosted by our development team, Zoom open office hours are the perfect opportunity to ask questions or make a suggestion. They are held on the second Tuesday of every month from 11:15 a.m. to 12:45 p.m. ET.

Open Positions



openondemand.org/jobs

Wendy Nilsen



The Challenge of Interdisciplinary Collaboration: Can I Collaborate on My Own?

Wendy Nilsen, Ph.D. is the Deputy Division Director in the Information and Intelligent Systems Division of the Computer and Information Science and Engineering Directorate at NSF.

Nilsen's work has focused on interdisciplinary science, especially at the intersection of computing and human functioning. Her interests span the areas of sensing, cyber-physical systems, machine learning, artificial intelligence and robotics.

Keynote Address